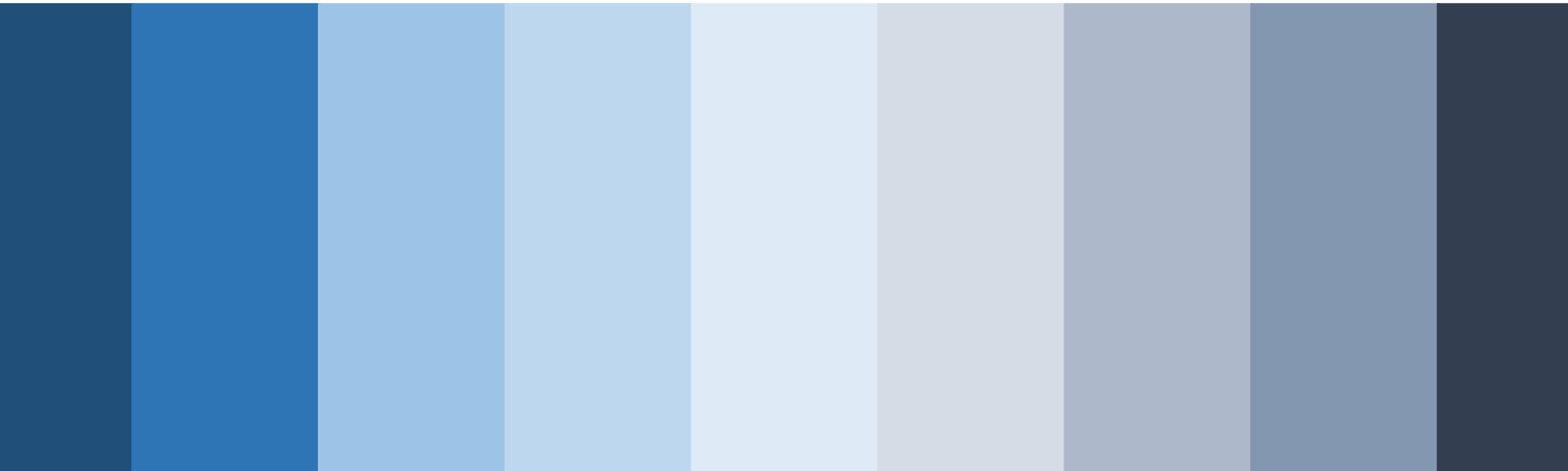




# **EPIC** International CORPORATE PROFILE

---

Rev.02-2018  
[www.epicbrunei.com](http://www.epicbrunei.com)



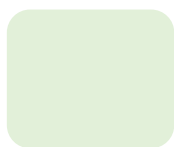


## ABOUT THE COMPANY

EPIC International Sdn Bhd is a 100% Bumiputra Company, with its goal to create new value, maintain high profitability and stability of its business. By securing available opportunities we implement the concept to reduce costs, increase efficiency in operations while improving quality service and products via technological advances.

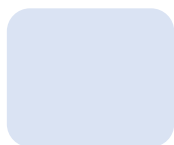
We strive to minimize its environmental impact and comply with the highest International Safety Standards. With its main core in Crew and Vessel Management, EPIC International has extended its portfolio towards Offshore and Onshore Maintenance and Engineering by partnering with reputable International companies in respond to the government to promote and synchronize the importance of developing local through knowledge transfer and acquiring key assets to compliment the needs of the industry.

“We promise to deliver the right work attitude and continually provide significant value”



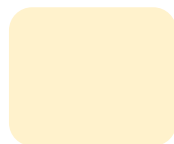
### PRODUCTS & SERVICES

Designed to cater your needs.....



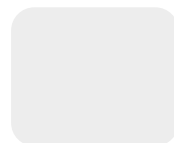
### ORGANIZATION

Delivering professionalism.....



### LOCAL BUSINESS DEVELOPMENT

Local empowerment.....



### PARTNERS INFORMATION

At your fingertips.....



### CONTACT US

More information.....





# PRODUCTS & SERVICES

Designed to cater your needs .....

## Offshore Support Vessels – OSV

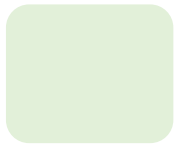
- Accommodation Work Barges – AWB
- Fast Crew Boats – FCB
- Utility & Supply Vessels – USV
- Subsea Support Vessels – SSV
- Platform Supply Vessels – PSV
- Seismic Vessels
- Well Intervention Vessels

### Services:

Fleet & Crewing Management  
Local Crew Training Program  
Fleet Port Clearance  
New Build Vessel Programs

## Electrical & Mechanical

- Electrical Switch Gear Maintenance
  - Transformer Routine Maintenance
  - Electrical Diesel / Hydro Maintenance & Diagnostic Services
  - Onshore & Offshore Asset General Maintenance
  - Mechanical & Technical Field & Workshop Services
  - Power Boiler & Pressure Vessels Alternation & Repair
  - In-situ Repairs, testing & Commissioning
  - Hook-up & Commissioning (HUC) Services
  - Plant Shutdown, turnaround Maintenance Works
  - Site Assessment & Predictive Maintenance for Rotating, Mechanical, Process, Instrument & Electrical Equipment
  - Reconditioning of Structural Components
  - Maintenance Project Management Services
- 



# PRODUCTS & SERVICES

Designed to cater your needs.....

## Onshore & Offshore Construction

- Flexible Flow-line / Umbilical & Riser Installation
- Onshore & Offshore Scaffolding Services
- Scaffolding Engineering & Manufacturing
- Scaffolding Accessories Supply
- Plant Engineering, Construction & Commissioning Works
- Precision Metal Designing & Machining
- Civil Structural Work for Plant & Equipment Foundation
- Subsea Pipeline & Structure Cutting Technologies

## Instrumentation

- Main Instrument & Automation Contractor – MIAC
- Control & Electrical System Upgrade
- Electrical Material Management Services
- Calibration Services
- Refurbishment of Power Plant Machinery Components



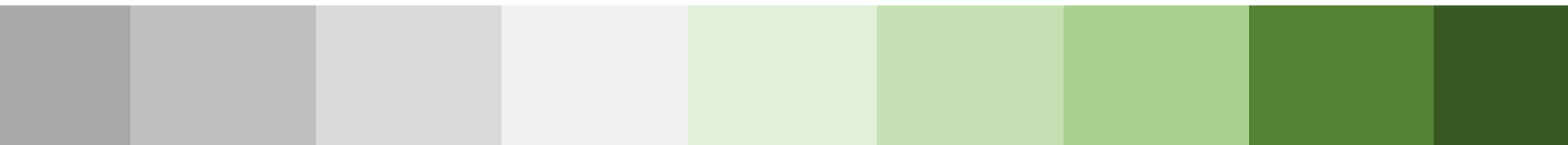
# Heavy lifting & Transportation

- Ring Cranes
- Terrain Cranes
- Mobile Construction Cranes
- Barge Cranes
- Crane Trucks
- Trailers

## Fabrication – Piping & Steel Works

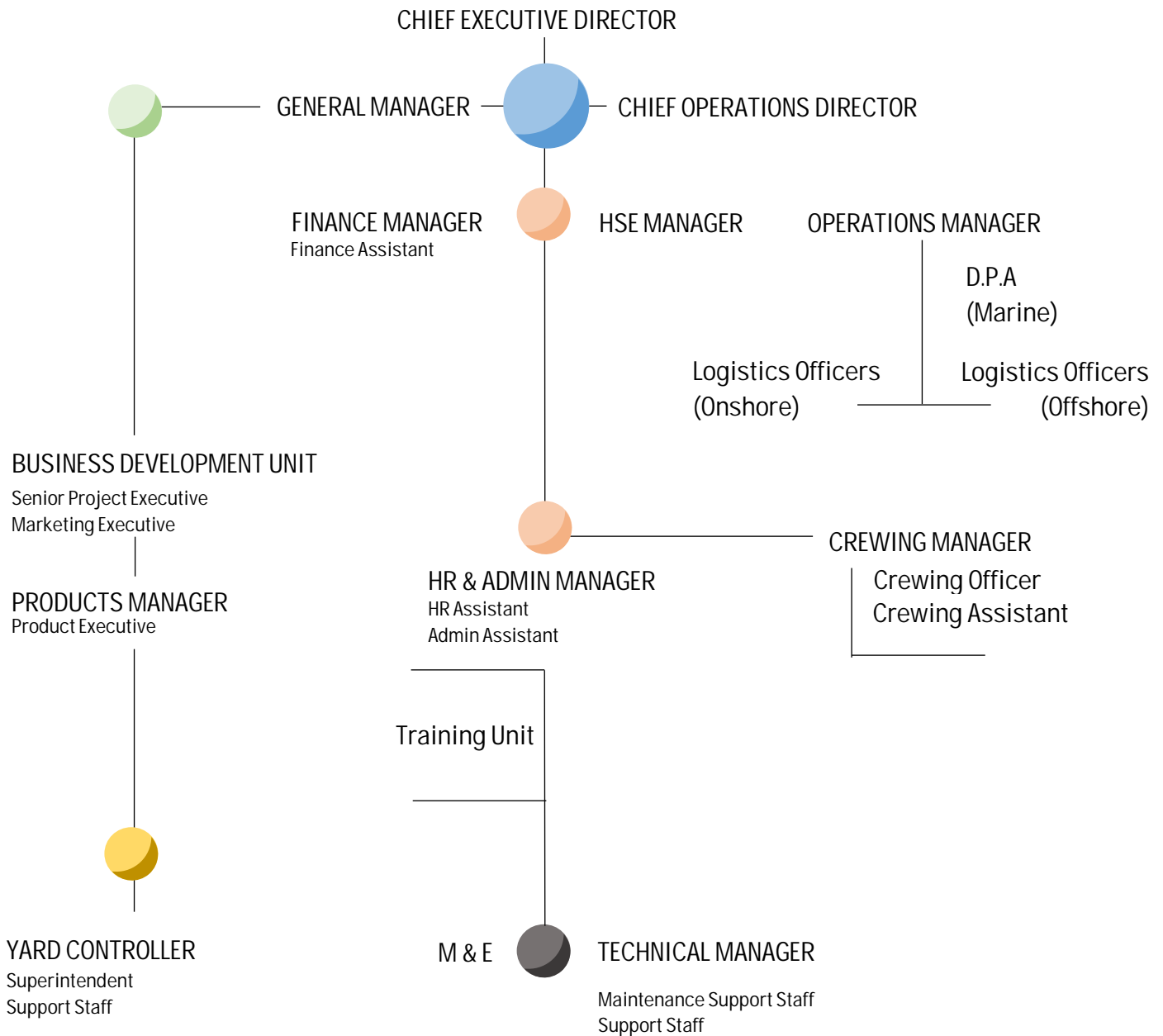
- Engineering, Procurement, Construction, Installation & Commissioning – EPCIC of Surface Safety Equipment
  - Piping Fabrication, Erection & Commissioning works
    - Mechanical & Piping Design
    - Modular Skid Fabrication & Testing
  - Onshore & Offshore Piping & Steel Fabrication Works
- Piping, Steel Structure & Pressure Vessel Fabrication, Erection & Commissioning
  - Details Engineering Analysis / FEED Study

## CCU & Others

- Offshore DNV Certified Cargo Carrying Units – CCU
  - Load Test Equipment inc Load Cell, Shanckles, Water Bag etc
  - Pipeline Protection Rehabilitation (Wrapping & Specialized Coating Products)
  - Spool Tie-In
  - W3P Enclosure System (Welding Habitat)
  - Sacrificial Anode Installation
  - Domestic Waste Management
- 

# ORGANIZATION

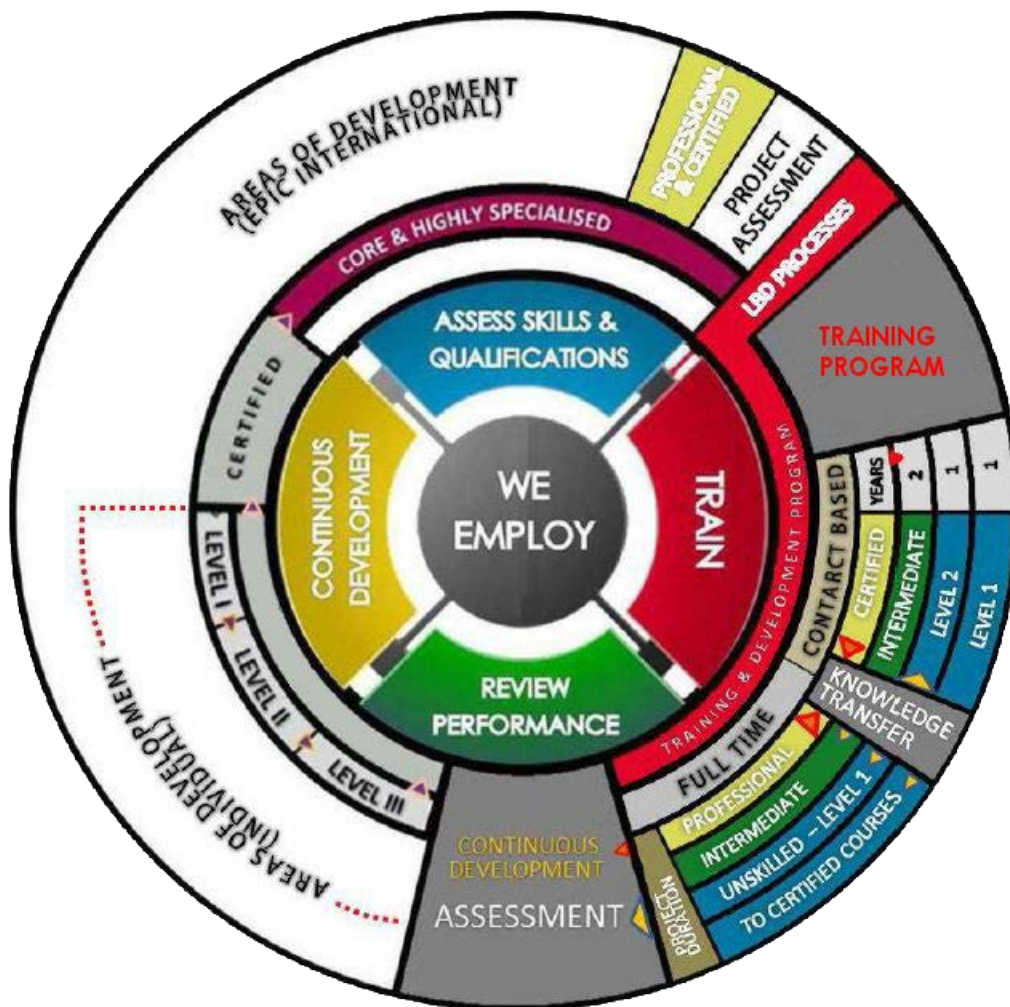
Delivering professionalism .....



Local empowerment.....

*"Empowering Local Development toward Operational Excellence"*

*“Aimed to be the leader in the Oil & Gas Industry –  
EPIC International integrate and emphasize on  
Local Business Development Through  
Engaging International Expertise for Knowledge Transfer, On-site  
Training programs with the latest Technology & Skills”*



# PARTNERS INFORMATION

At your fingertips.....

**AIRBLAST**



**CDIG**



**GRINDEX**



**IO Setia Ventures**



**KONG**







## CONTACT US

More information .....

JERUDONG ATIYA COMPLEX  
UNIT 16, BLOCK E, SPG 6  
JALAN MAHARAJA DINDA  
JALAN JERUDONG BG1721  
BRUNEI DARUSSALAM

O: +673.2672200

F: +673.2610680

E: [admin@epic-brunei.com](mailto:admin@epic-brunei.com)  
[operations@epic-brunei.com](mailto:operations@epic-brunei.com)

[www.epicbrunei.com](http://www.epicbrunei.com)

